



# Experts in radio communications



Mount Campbell Communications Limited

✉ [admin@mountcampbell.co.nz](mailto:admin@mountcampbell.co.nz)

☎ 0800 22 33 60

Hytera 

**tait**  
communications

# About us



Mount Campbell Communications Ltd was established in the 1950s and is named after Mount Campbell which is situated to the west of Motueka.

We are a privately owned company operated by Lloyd Wensley and based in Nelson.

We supply, service and install mobile radio and related communications equipment.

Through the network side of our business, Mount Campbell Connect Limited, we provide radio network services across the top of the South Island.

As a local company, we have made it our business to understand the communication needs of our local industries and aim to deliver the best products and services to meet these needs at affordable prices.



## Our Network

Mount Campbell Connect Limited operates radio services from over 20 sites throughout the Upper South Island.

We're continually improving our network to increase its capacity and functionality so we can respond to the changing communication needs of our customers.

### WE OFFER A RANGE OF NETWORK OPTIONS INCLUDING:

- + Analogue single site and point-to-multipoint networks
- + Digital Mobile Radio (DMR) Tier II
- + Digital Mobile Radio (DMR) Tier III

### EXTENSIVE COVERAGE FOR OUR CUSTOMERS

Our extensive local network infrastructure helps ensure your employees can communicate when and where they need to across the Upper South Island.

We'll produce comprehensive coverage maps so that you know exactly where you can expect your mobile radio communications to work.

## DMR Tier 3 Network Features

- + **Over the air programming**  
Tait radios connected to our DMR Tier 3 Network can have channels and features programmed remotely
- + **All in group calls and individual one-to-one radio calling**  
Private and secure radio communications
- + **Telephone calling**  
Radio call to and from NZ landline or mobile phones
- + **Enhanced call clarity**  
Improved call clarity compared to analogue
- + **Greater battery Life**  
Portable radios operating in DMR mode
- + **Man down / Lone worker / GPS location safety features**  
Improve worker safety
- + **Ability to integrate emergency management platform across the radio network**  
Improve emergency reporting and response times



# Why DMR Tier III?

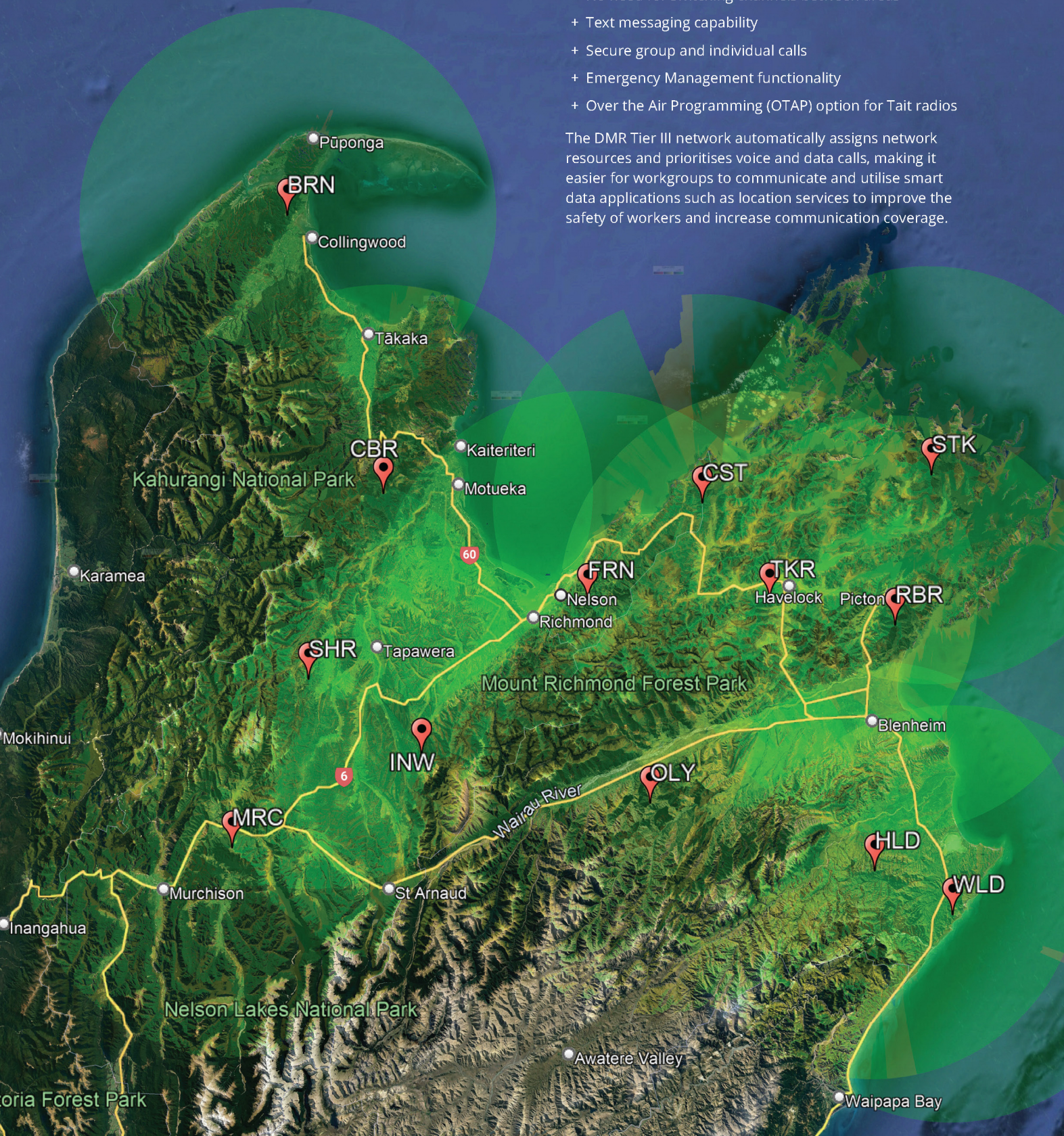
The DMR Tier III digital communications platform offers the ideal combination of flexibility, control and resilience across the network.

\*Illustration indicative coverage only

## Key features of the DMR Tier III platform are:

- + Superior coverage – our DMR Tier III network operates across 15 plus sites, making it the most extensive network of any land mobile communications provider in the upper South Island
- + The ability to make phone calls to and from radios
- + No need for switching channels between areas
- + Text messaging capability
- + Secure group and individual calls
- + Emergency Management functionality
- + Over the Air Programming (OTAP) option for Tait radios

The DMR Tier III network automatically assigns network resources and prioritises voice and data calls, making it easier for workgroups to communicate and utilise smart data applications such as location services to improve the safety of workers and increase communication coverage.



# Radio Equipment

Mount Campbell Communications supplies and services the latest mobile radio equipment, including the well-known Tait and Hytera brands.

Our team has the technical expertise and understanding of multiple industry sectors to give you tailored advice on which equipment will meet your needs and your budget.



## Tait products

Tait has been designing and manufacturing critical communications equipment for more than 50 years. Tait products are used across a range of sectors including transport, utilities and infrastructure maintenance, security and public services.

Mount Campbell Communications is proud to be associated with this well-regarded New Zealand brand. We can supply a range of Tait products designed to operate reliably in even the most demanding environments so your team can work safely and efficiently.



## Hytera products

Developed in China, Hytera wireless two-way radios feature innovative technology to meet the needs of a variety of industries.

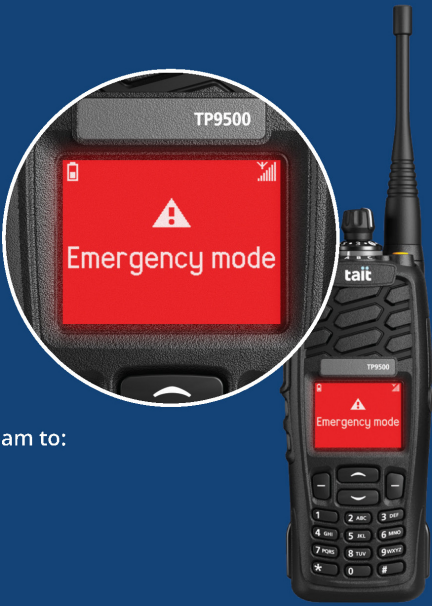
# Health and Safety

Extend the reach of your Health & Safety with Emergency Reporting over our DMR Tier 3 network.

## Emergencies on DMR Tier 3 network

Location-based applications available via the DMR Tier III network enable your team to:

- + Issue and receive location-specific information and health and safety warnings
- + Maintain a dynamic, real-time view of operations across locations
- + Respond quickly in the event of an emergency

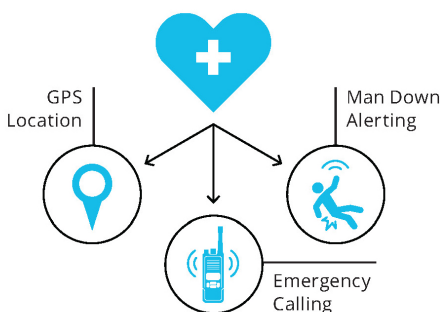


### “Man Down” alert

The “Man Down” safety feature uses a tilt sensor and an accelerometer to detect a change in position or sudden G-force applied to a mobile radio which may indicate that the operator has fallen. Such an event will trigger a warning alarm and if the operator doesn't respond to this alarm, an alert will be sent to a designated dispatcher or another two-way radio.

### Lone Worker feature

The Lone Worker feature is designed to help safeguard employees working alone and in potentially hazardous environments. When Lone Worker mode is activated on a user's radio or cellular device, the user will be prompted to “check in” through their device at pre-programmed intervals. If a worker fails to report in, the device will send an emergency notification to indicate that the user may require assistance.



### Location and Emergency Management Platform

The emergency notification feature is available via an emergency button alarm on either a radio or cellular device.

When a staff member pushes the emergency button on their radio or cellular device this can be configured to set an alarm off at base, send an SMS or email message to nominated responders, or the whole team, including a geo-location link to pinpoint the emergency's location.

Monitor Radio user locations to identify the closest unit to assist in an emergency response



### Geofencing feature

The geofencing feature allows for the creation of customized geofences which can alert users to hazards or “no go” areas.



## Vehicle installation

Mount Campbell Communications specialises in installing mobile communications systems into any vehicle. Whether you have a truck, a bulldozer, a crane, a boat, a campervan or even a motorbike our highly skilled technicians can set up and install your communications system to meet your requirements in our purpose-built workshop.

## Equipment servicing

Mount Campbell Communications has the facilities and expertise to service your radio equipment to ensure it continues to perform at the highest level.

Through our partnerships we have ready access to replacement parts and our technical product support won't let you down.



✉ [admin@mountcampbell.co.nz](mailto:admin@mountcampbell.co.nz)  
☎ 0800 22 33 60  
🌐 [mountcampbell.co.nz](http://mountcampbell.co.nz)

108 Quarantine Road  
Annesbrook, Nelson 7011  
New Zealand

